



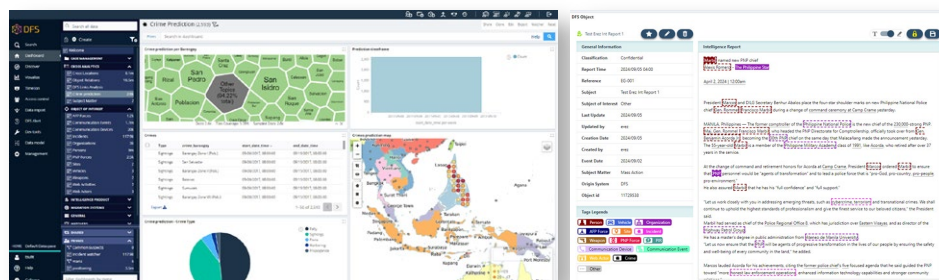
# NSDE

## Data Fusion System (DFS)



## Revolutionizing Intelligence for Law Enforcement

NSDE DFS is a cutting-edge data analysis platform tailored for law enforcement agencies. It equips police units with real-time intelligence, improves crime pattern analysis, and facilitates suspect tracking through advanced data fusion and machine learning technologies. With NSDE DFS, agencies gain actionable insights that support both tactical and strategic decision-making in the fight against crime.



Challenges in modern law enforcement intelligence include data fragmentation across different jurisdictions and systems, delays in intelligence analysis and report generation, and the difficulty of effectively linking suspect information with criminal activities. Additionally, there is a growing need for rapid response capabilities during emergencies. NSDE DFS addresses these issues through its integrated and automated approach, providing law enforcement agencies with the tools necessary for more efficient operations.

## Why NSDE DFS?

- **Comprehensive Criminal Insights:** Provides a 360-degree view of criminal activities, suspect profiles, and crime trends.
- **Real-Time Data Fusion:** Integrates live data from various sources, ensuring actionable intelligence is always available.
- **Enhanced Officer Safety:** Supports law enforcement in planning and executing operations with detailed, reliable intelligence.
- **Adaptability:** The platform is flexible and scalable, tailored to meet the evolving needs of law enforcement agencies as they respond to changing security landscapes.

# State-of-the-art analytics platform designed for law enforcement agencies.



**Real Time Crime Center**  
Situation awareness supporting the front line

**Dispatch Center**  
Real time intelligence & search supporting officer dispatch

**Crime Analysis**  
Intelligence platform for pattern dictation

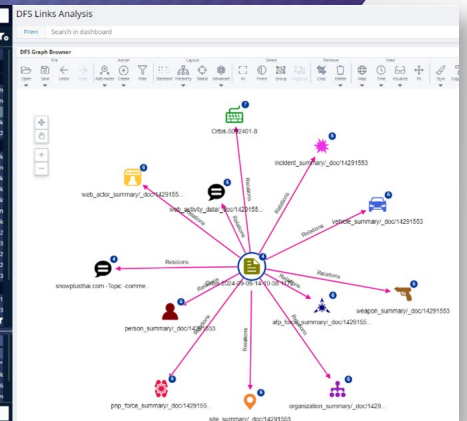
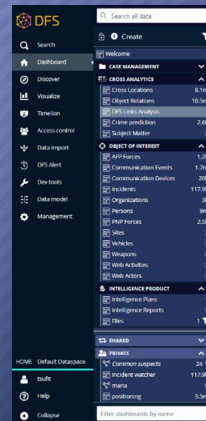
**Patrol Officer**  
Mobile connectivity for street intelligence and officer safety

**Investigation Unit**  
Complete investigation workflow across all data sets

**Digital Forensics**  
All data sources linked to digital forensics

**Internal Affairs**  
Internal investigations & ongoing staff vetting

**Training Division**  
Engage with data and understand the benefits



## Key Features for Law Enforcement

- ▶ **Advanced Data Modeling:** flexible mechanism that enables creating entities and relations.
- ▶ **Crime Pattern Detection:** Identifies emerging crime trends & hotspots through predictive analytics.
- ▶ **Suspect Profiling & Monitoring:** Integrates data to build detailed suspect profiles and track activities across regions.
- ▶ **Real-Time Intelligence Sharing:** Facilitates secure interagency collaboration and intelligence exchange for coordinated actions.
- ▶ **Automated Reporting:** Produces rapid, data-driven reports for law enforcement operations and strategic planning.
- ▶ **Powerful Link-Analysis Engine:** A key feature of NSDE is its robust link-analysis engine, enabling users to find "paths" between two individual entities, between entities in one set, or between entities in two separate sets. Users can refine searches by attributes like type, date, and intensity.
- ▶ **Data Security:** NSDE DFS supplies tailored security hooks into the search procedures, to comply with the client organization's specific requirements. Security considerations like data classification, compartmentalization and "the need to know" are easily applied to both the indexing and the query phases.

## Get Started with NSDE DFS Today!

Equip your law enforcement agency with the power of NSDE DFS. Discover how our platform can transform your intelligence operations, enhance situational awareness, and improve crime prevention strategies. Contact us for a personalized demo and consultation.

## Advantages:

- ▶ **Unified Crime Data Platform:** Combines data from various sources such as CCTVs, patrol reports, social media intelligence, and databases to offer a comprehensive view.
- ▶ **Predictive Policing Capabilities:** Uses machine learning models to predict crime patterns and suggest preventive measures.
- ▶ **Interagency Communication Hub:** Ensures secure and seamless communication between different law enforcement units for coordinated responses.
- ▶ **Rapid Response Reports:** Automates the generation of tactical and strategic reports, allowing officers to act quickly on verified intelligence.
- ▶ **Real-time Integration with the Awareness C2 system:** Synchronizes field intelligence operations, ensuring coordinated and efficient responses through real-time situational awareness



**TSG IT Advanced Systems Ltd.**

www.tsgitsystems.com

tsg@tsgitsystems.com

+972-3-5483555

